



Shadesol

OUTDOOR SHADES
PRODUCT GUIDE

VO61224



TWO GUIDELINES

Orders that are released to TWO are processed in the most timely manner possible. As such, any changes made to an order once it is released to TWO cannot be guaranteed to be applied.

Invoices for orders with multiple products are due upon receipt of each product.

If the order is already in production, initial costs, cancellations or any change costs will be the responsibility of the dealer to cover.

All drawings, notes and emails with questions must be answered before an order is entered in to the production line. Delays in the timely processing of these by customers will lead to longer lead times.

All factory/freight repairs are to have photographic/video proof. If neither are available at the time of placing the repair, it will be processed as a dealer responsibility. TWO will credit back the cost of the repair once proof of factory/freight responsibility is given.

For special request/non-standard/limited availability items please check first with Head Office for availability. Any surcharges for these items will be the responsibility of the dealer to cover, even if it is not listed on the price list.

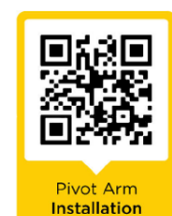
PDF Estimates generated from the system may not reflect final pricing. If all items are not selected in the order form or details are added to the notes section, the price may be altered.

All dealers are responsible for having the most current price lists and product manuals. If unsure please contact your Account Manager to confirm.

TABLE OF CONTENTS

Care & Maintenance.....	4	Shadesol Pivot Arm.....	53
Shadesol Wire Guide.....	5	Fabric & Colours.....	54
Fabric & Colours.....	6	Mount.....	56
Mount.....	8	Componentry.....	57
Componentry.....	9	Specifications.....	60
Specifications.....	12	Operation.....	61
Operation.....	13	Motorisation Accessories.....	62
Motorisation Accessories.....	14	Options.....	65
Options.....	18		
Shadesol Wire Guide Extreme.....	21		
Fabric & Colours.....	22		
Mount.....	24		
Componentry.....	25		
Specifications.....	28		
Operation.....	29		
Motorisation Accessories.....	30		
Options.....	34		
Shadesol Straight Drop.....	37		
Fabric & Colours.....	38		
Mount.....	40		
Componentry.....	41		
Specifications.....	44		
Operation.....	45		
Motorisation Accessories.....	46		
Options.....	50		

Channel Guides:



CARE & MAINTENANCE

In order to prolong the life of your Shadesol blind and provide optimum performance, we recommend the following care and maintenance guidelines.

Regular Cleaning (At least every 3 months)

- Ensure surfaces are free from dirt, dust and grime.
- Clean the Shadesol blind with a soft brush.
- Run a soft brush along side channel to prevent dust and dirt build up.
- Clean aluminium with a soft cloth and warm soapy water or a small amount of mild detergent if required. Do not use abrasive cleaning agents (eg. Ajax or steel wool) in any circumstance.

Do Not:

- Do not leave the Shadesol blind down when you are away from your home or in extreme weather conditions.
- Do not roll the Shadesol blind up when wet (to avoid mould and mildew).
- Do not force the Shadesol blind up or down if it is jamming. Forcing the Shadesol blind may result in further damage. Contact your Shadesol supplier for guidelines of how to fix.

Common Characteristics:

Depending on the fabric selection, when the Shadesol blind is initially pulled down some ripples may be evident. The ripples will lessen over time as the weight of the blind will stretch the fabric slightly and the ambient temperature will heat the fabric.

When a motorised blind is operated some 'jolting' may be evident. This effect is due to wind gusts causing spontaneous friction between the fabric edge and side guides. This occurrence does not damage the blind.



Operate the Shadesol blind at least once a week to prevent build-up of dirt that will inhibit the operation of the blind.



Shadesol

ALFRESCO | WIRE GUIDE

To ensure you are reading the most up to date product information, always refer to the latest version of the product guide. The latest version is available to download from the Sales & Marketing Centre.

If you have any product, installation, ordering or pricing questions, please contact your TWO Account Manager for assistance.

For pricing, please refer to the price and surcharge list.

Swatched Range

To order your Shadesol fabric swatch book, please contact your TWO Account Manager.

Fabric	
Group 1	Colours
X-Weave 5%	Ebony, Charcoal, Flint, Monument, Woodland Grey, Shale Grey, Paperbark, Surf Mist, Snow
Group 2	
X-Weave 1%	Ebony, Charcoal, Monument

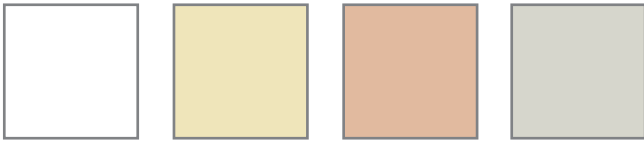
Shadesol X-weave fabrics have been fire tested and certified as fire retardant.

All Other Fabric Ranges

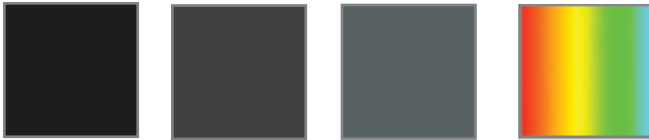
The below range of fabrics are available to order while stock last.

Fabric
Group 1
SolarView
Group 2
Visiontex View 85%
Ricky QM5
Kleenscreen
Group 3
Visiontex Plus 94%
Visiontex Ultra 99%
Outlook Mode 95%
Group 4
Mode Privacy 99%
Visiontex Extreme
Mode Zero

Standard Colours



White Classic Cream Paperbark Surf Mist



Black Monument Woodland Grey Custom

Hardware is available in 7 standard colours plus the option to custom powder coat.

Textured Colours



White Black Monument

Sleek, textured finishes are available in black, white and monument. The finish is highly durable, making scratches and marks less noticeable.

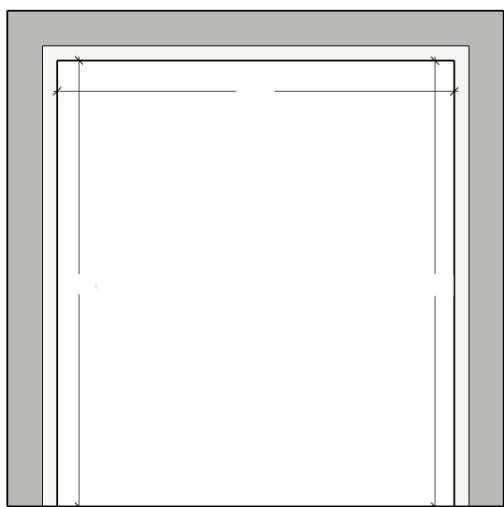
The textured finish is only available for the Box 120, side channels, F56 & F72 base rail and Face Fit Rail. Brackets and other headbox options are not available in this textured finish.

Custom Colours



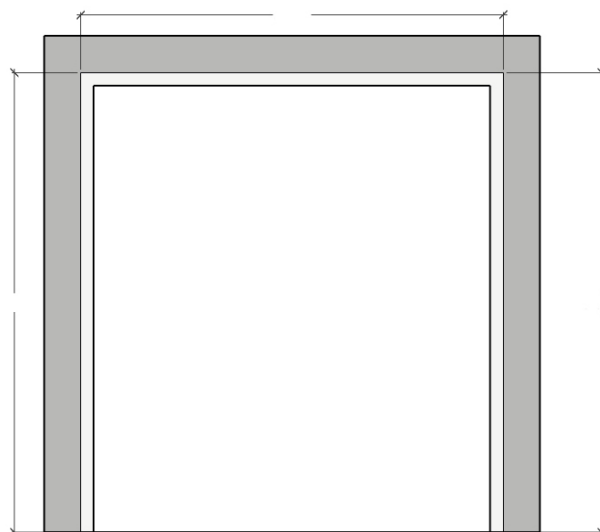
For custom colours, please refer to the current Dulux Powder Coat Selector.

Side Fit



Side Fit (Inside): The wire guide blind is installed on the inside of the opening.

Face Fit



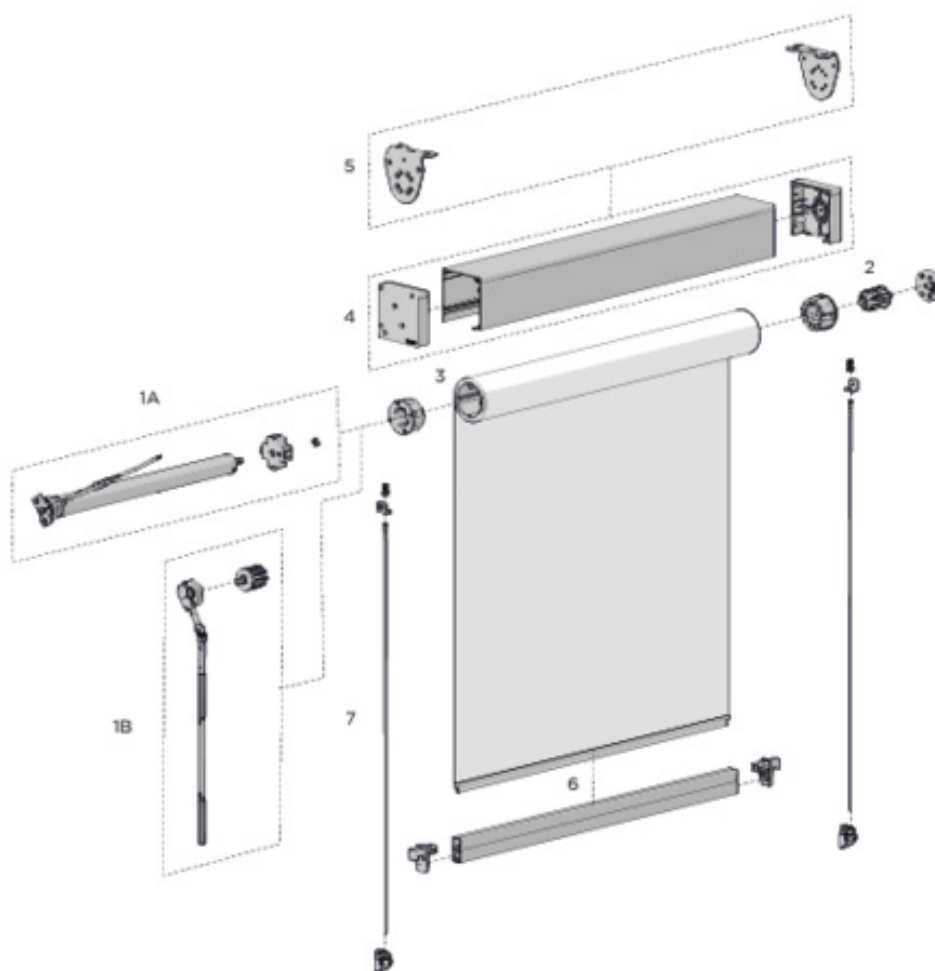
Face Fit (Outside): The wire guide blind is installed on the front of the opening.

When determining the mount, check for any obstructions within or outside of the opening such as hand rails and check for out-of-square measurements, which may affect the operation of the blind as it moves up and down.



Componentry Breakdown

Wire Guide, Headbox, Motor, F56 Weight Bar



Item # Description

1. CONTROLS:

A - Motor

B - Crank

2. IDLER

3. TUBE: 78mm/110mm/130mm

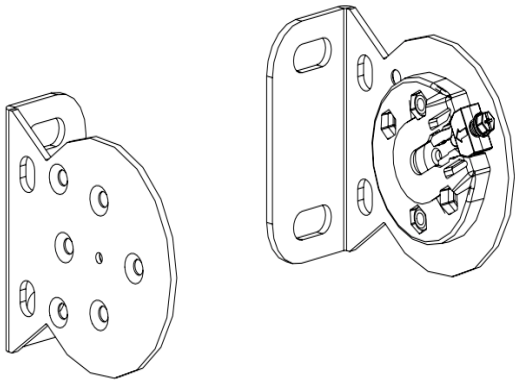
4. BOX: 120 or 160

5. BRACKETS: Round/Extreme

6. WEIGHT BAR: F56/F72

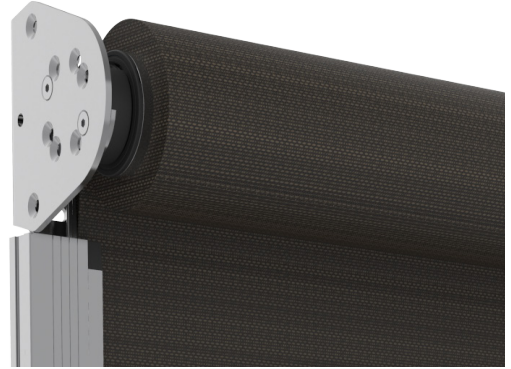
7. WIRE GUIDE: 3.2mm/4mm

Open Brackets



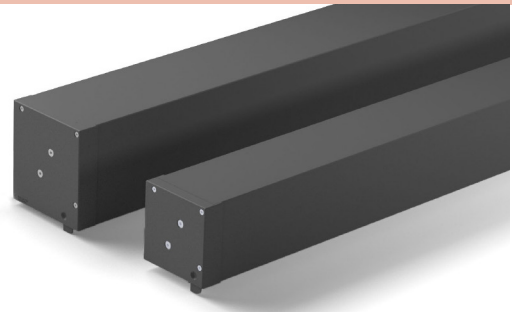
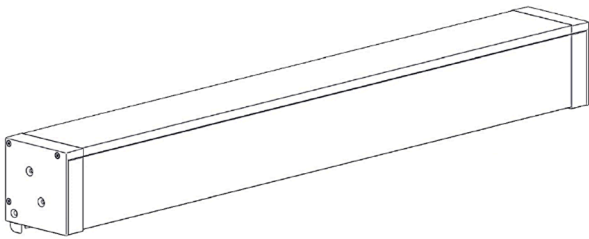
Surcharge applies for bracket covers.

Stainless steel open brackets available. Surcharge applies.



Headbox

Surcharge applies.



Box 160 - Suitable for blinds up to 7m in width and a max drop of 3m (21m² max area)

Box 120 - Suitable for blinds up to a 5.8m width and a max drop of 4m (15m² max area)

Tube

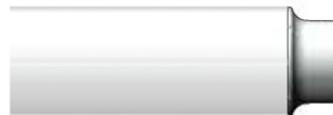


78mm
Aluminium



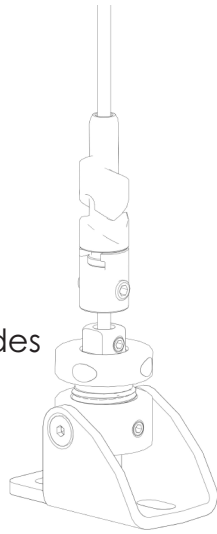
78mm
Aluminium
Heavy Duty

Tube with reducer attached.

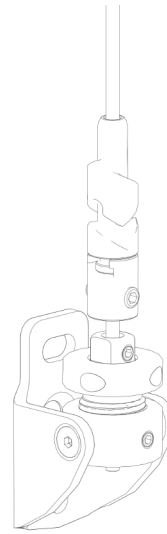


Side Guides

Side Wire Guides
Floor Fix



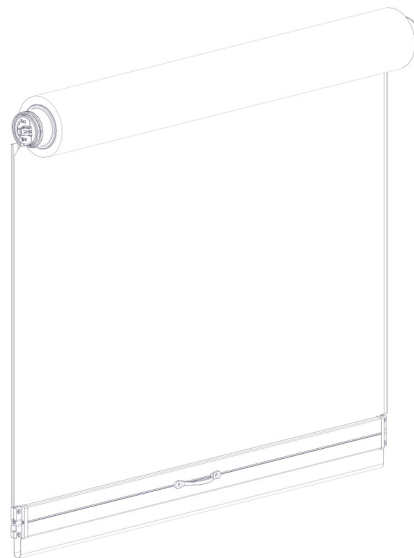
Side Wire Guides
Face/Side Fix



Screen with 2 Base Rail Options

The standard **F56 Base Rail** is included at all sizes and colour matched to the headboard and/or side channels.

Standard upgrade to **F72 Base Rail** applies to Shadesol blinds over 4m wide (included in price). If under 4m wide it is available as an optional upgrade (see Options).



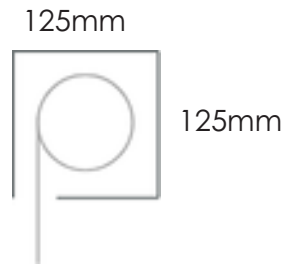
F56 Options

Widths	Colours
800mm - 4000mm	White Classic Cream Paperbark Natural Anodised Monument Woodland Grey Black Custom*
	*Surcharge applies. Expect a longer lead time.

F72 Options

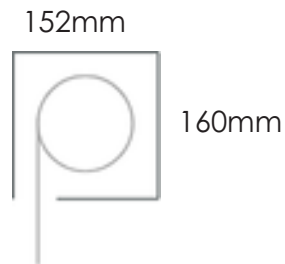
Widths	Colours
4001mm - 7000mm	White Woodland Grey Black Monument Natural Anodised Custom*
	*Surcharge applies. Expect a longer lead time.

Capacity



Headbox 120

Suitable for blinds up to a 5.8m width and a max drop of 4m (15m² max area)



Headbox 160

Suitable for blinds up to 7m in width and a max drop of 3m (21m² max area)

Always measure looking from the front of the Shadesol blind with the blind as a back roll.

! Shadesol orders received are assumed to be provided make size (outside box measurement). We do not take any further deductions.

Manual: Crank Gear

Easy-to-use manual crank operation, unobtrusive design, removable crank.



Motorised: Rollease Acmeda Range

Automate Motors

FT S60 for Wire Guides (under 15m²)

Automate Remotes

5 Channel

15 Channel

Push Pro

Automate Sensors

Automate Wind + Sun Sensor (solar)

Automate Pulse / WiFi Hub (suitable with all ARC motors)

Repeater

Minimum Width per Operation Type

Operation type	Minimum Width
Crank	500mm
15 Nm Motor (Automate FT S60)	770mm
10 Nm Motor (Linx Volt Torque Battery)	1000mm
10 Nm Motor (Whispertech Battery-operated)	1000mm



Motor Programming Guide

Click here to download the Automate programming guide.

Motorised: Whispertech™ Range

Motors Wire-Free

Whispertech 10Nm (1m min width, 5.8m max width, 15m² max area)

Remotes & Extras

Bond Bridge Hub

6 Channel Remote

USB-C Charger with Magnetic USB-C Connector. (A USB-C Connector will be provided for every Whispertech motorised blind. Adaptor not included).



Motor Programming Guide

Click here to download the Whispertech programming guide.

Motorised: Somfy Range

Somfy Motors

Altus 50 RTS 6/32 (up to 6m²)

Altus 50 RTS 25/17 (between 6 & 8m²)

Altus 50 RTS 40/17 (between 9 & 10m²)

Somfy Remotes

Situo 1 Channel (Pure)

Situo 5 Channel (Pure)

Somfy Sensors

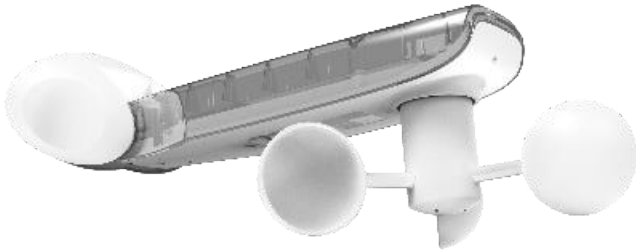
Eolis RTS Sensor (wind)



Motor Programming Guide

Click here to download the Somfy programming guide.

Solar Sensor: Automate ARC



Solar Sensor: Soliris RTS



The Soliris RTS Sun and Wind Sensor automatically controls your RTS motorised products based on current weather conditions.



Set Up Guide

Click here to download Automate Solar Power, Wind, Light & Rain set up guide.



Set Up Guide

Click here to download Soliris RTS Sensor set up guide.

Automate External 240V AC Wind & Light Sensor



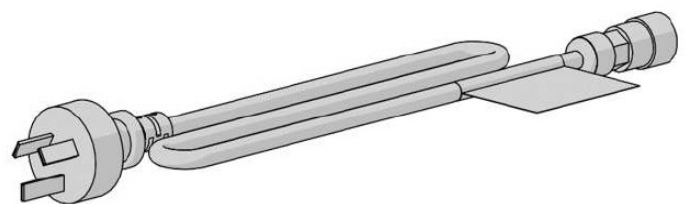
Features an anemometer to measure wind speed and a lux meter to measure light intensity and perform an automated action.

Integrated LCD displaying signal strength, wind speed and lux values. Switches to off mode for energy saving.

Compatible with all ARC external motors.

Can be mounted to the roof, wall, eave or fascia, to suit your requirements.

Automate Molex with Plug



- Provides a quick & easy connection option for installation of our external motors when a nearby GPO is available.
- Pre-terminated with a standard 3-pin plug, so an electrician is not required on site to complete the job.
- Maintains the use of the in-line connection.

Remote: Push 1 Channel



Push 1 Channel remote offers intuitive, user-friendly operation with tactile buttons, perfect for controlling single blinds or multiple blinds at once. Available in sleek gloss white or elegant matte black, it seamlessly complements the existing Push range with its slim, modern design.

Remote: Push 5 Channel



Remote: Push Pro



For the ultimate convenience, the Push Pro elevates your home automation experience with full home control, complete with built-in timer functionality, custom shade naming, and user-friendly configuration.

Remote: Automate RF White 5-Channel



The Automate Paradigm surface mount switch features a contemporary design and a wire-free deployment, making it retrofit-ready for any location. Paradigm 5-channel switches are perfect for all internal motorised blind applications.

Remote: Situo RTS



Control all Radio Technology Somfy® (RTS) products such as draperies, roller/Roman shades, awnings and LED lights with an elegant Situo® RTS control. Sporting a sleek modern look, it's sure to add a touch of elegance to any decor.

Remote: Smoove 1 RTS



The Smoove® 1 RTS surface-mounted wall switch avoids cutting into drywall. This single channel, battery-operated solution is easy to install, and doesn't require an electrician. Compatible with seven decorative color frames (sold separately), users can easily complement any décor.

Remote: Whispertech 6 Channel



- 6 channels
- 1 group
- Simple to program with the Whispertech 1.1Nm and 2Nm battery-operated motors

Automation: Automate Pulse Hub

Smartphone control is only available with the Automate motor + Pulse Hub - additional surcharge applies.



Set Up Guide

Click here to download Automate Pulse set up guide.



Programming iOS

Click here to download the programming guide for iOS.



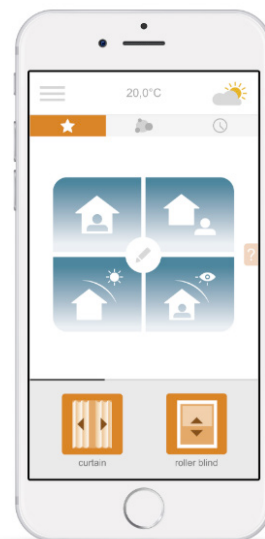
Programming Android

Click here to download the programming guide for Android.

Automation: Connexoon Windows RTS

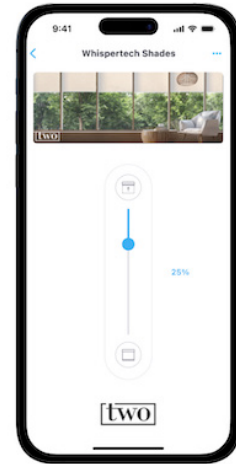
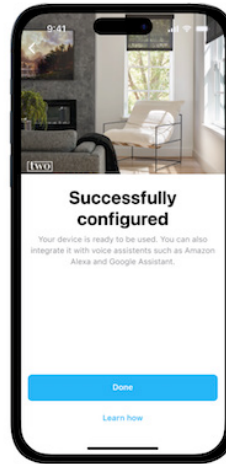
Connexoon Window RTS is an intuitive, smart and playful app control solution designed to simplify your life.

- Control for up to 30 RTS channels per Connexoon from iOS and Android devices
- 4 scenarios per Connexoon
- 4 modes per Connexoon
- 8 schedules per Connexoon
- Automate window coverings with Scenes and Schedules
- Supports Up/Down/Stop commands and incremental control (tilt/brightness)
- Remote access via internet connection
- Ability to connect 4 smartphone devices
- Compatible with entire range of RTS products
- IFTTT (If This, Then That) compatible
- Ability to control via third-party voice assistants include Google Home and Amazon Echo
- Trigger scenes and schedules using voice commands or pre-set automations



Automation: Bond Bridge Hub

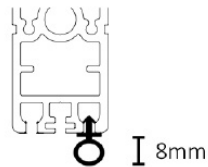
- Facilitates complete automation of your motorised roller blinds.
- Seamlessly integrates with the WhisperTech™ motor for enhanced user experience. It is also compatible with Rollease Acmeda motors.



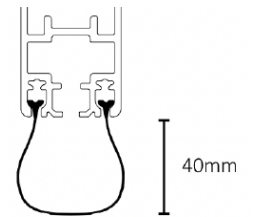
Bubble Strip



The Bubble Strip is the default factory option unless otherwise specified.



Ultra Seal



The Ultra Seal is the only option available for the Ultra Lock.

The Ultra Lock comes standard with the Ultra Seal. As the Ultra Lock drops down in order to unlock itself, the Ultra Seal allows for the deduction at the bottom. No other seal is appropriate for the Ultra Lock.

WIRE GUIDE | OPTIONS

Headbox



Full enclosed cassette



Semi fascia

Surcharge applies.

Handle

Handle available in stainless steel and dark grey



Base Rail - F56



Bead feature

Base Rail - F72



The F72 is suitable for blinds 4m - 5.8m wide.

F72 Options	
Widths	Colours
4001mm - 7000mm	White Woodland Grey Black Monument Natural Anodised Custom*
	*Surcharge applies. Expect a longer lead time

F56 Options	
Widths	Colours
800mm - 4000mm	White Classic Cream Paperbark Natural Anodised Monument Woodland Grey Black Custom* *Surcharge applies

Standard Angles

Angles	
Type	Size
Angle Mill	40 x 20 x 3mm 40 x 40 x 3mm 75 x 25 x 3mm 100 x 50 x 6mm 25 x 25 x 3mm 50 x 25 x 3mm 50 x 50 x 3mm
Flat Bar Mill	50 x 3mm 100 x 3mm
Square Box Section Mill	50 x 3mm 100 x 50mm

Custom angles can be sourced. Please send an enquiry to TWO Orders prior to placing the order.



Shadesol

ALFRESCO | WIRE GUIDE EXTREME

To ensure you are reading the most up to date product information, always refer to the latest version of the product guide. The latest version is available to download from the Sales & Marketing Centre.

If you have any product, installation, ordering or pricing questions, please contact your TWO Account Manager for assistance.

For pricing, please refer to the price and surcharge list.

Swatched Range

To order your Shadesol fabric swatch book, please contact your TWO Account Manager.

Fabric	
Group 1	Colours
X-Weave 5%	Ebony, Charcoal, Flint, Monument, Woodland Grey, Shale Grey, Paperbark, Surf Mist, Snow
Group 2	
X-Weave 1%	Ebony, Charcoal, Monument

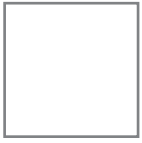
Shadesol X-weave fabrics have been fire tested and certified as fire retardant.

All Other Fabric Ranges

The below range of fabrics are available to order while stock last.

Fabric
Group 1
SolarView
Group 2
Visiontex View 85%
Ricky QM5
Kleenscreen
Group 3
Visiontex Plus 94%
Visiontex Ultra 99%
Outlook Mode 95%
Group 4
Mode Privacy 99%
Visiontex Extreme
Mode Zero

Standard Colours



White



Woodland Grey



Black



Monument



Custom

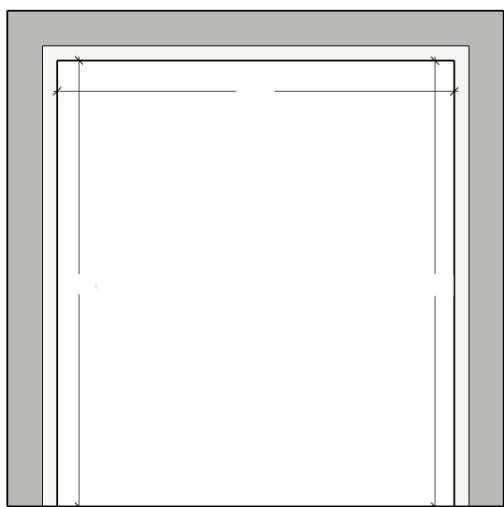
Hardware is available in 4 standard colours plus the option to custom powder coat.

Custom Colours



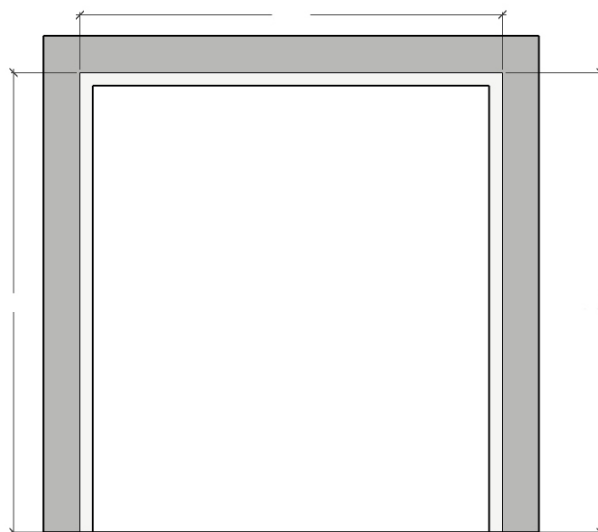
For custom colours, please refer to the current Dulux Powder Coat Selector.

Side Fit



Side Fit (Inside): The wire guide blind is installed on the inside of the opening.

Face Fit



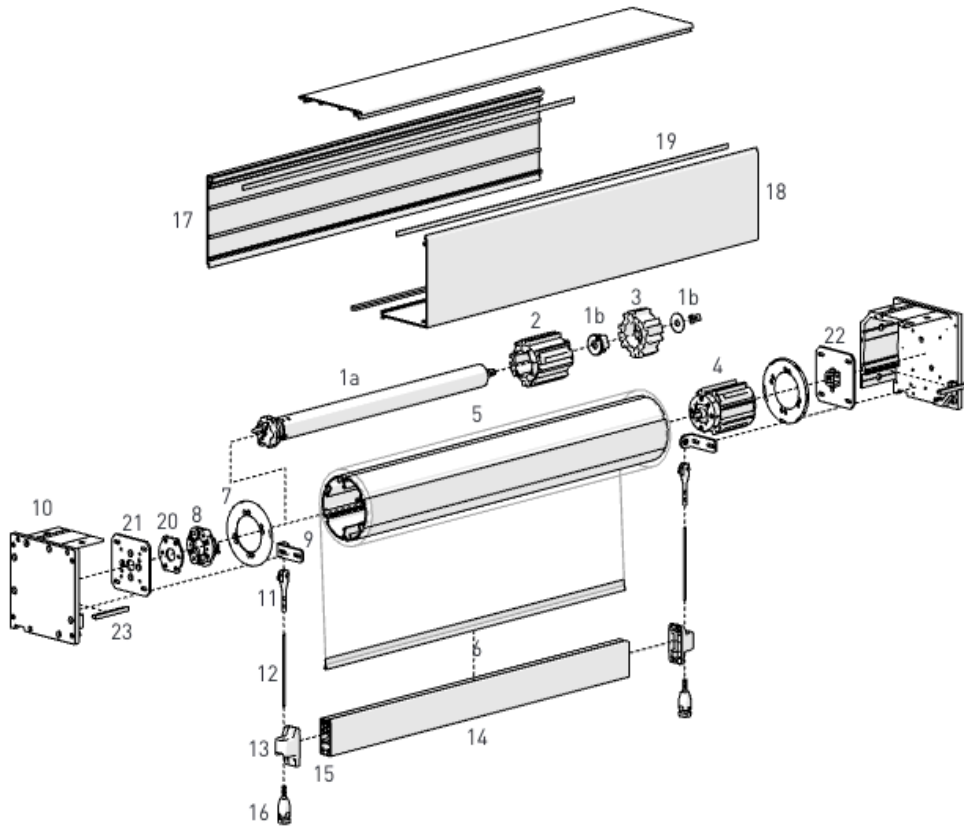
Face Fit (Outside): The wire guide blind is installed on the front of the opening.

When determining the mount, check for any obstructions within or outside of the opening such as hand rails and check for out-of-square measurements, which may affect the operation of the blind as it moves up and down.



Componentry Breakdown

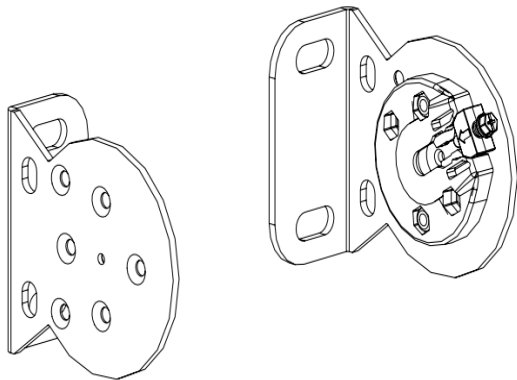
Wire Guide Extreme, Box 190, Motor, F72 Weight Bar



Item # Description

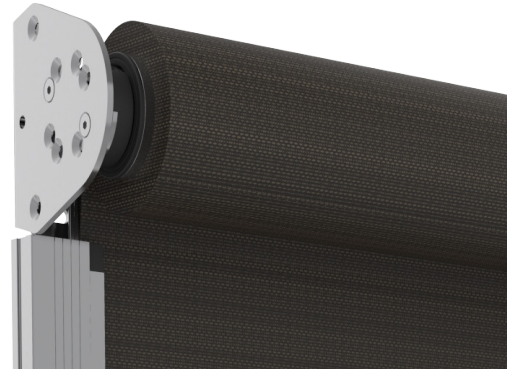
- | | |
|---|---|
| 1.a) AUTOMATE AX30 & AX50 Motors | 12. Stainless Steel Wire w/ PVC coating - 4mm |
| b) AUTOMATE Extreme Drive Wheel | 13. F72 Wire Guide End Caps |
| Adaptor Kit | 14. F72 Multi Bar |
| 2. Extreme Universal Crown Wheel | 15. Ballast - 25 x 8mm Galv Flat Bar x 3m |
| 3. Extreme Drive Wheel | 16. Tension Bracket & Flat Head Stud Terminal |
| 4. Extreme Bearing Idler | 17. Extreme Cassette Top & Back Extrusion |
| 5. S100 Aluminium Tube | 18. Extreme Cassette Front Cover Extrusion |
| 6. Spline | 19. Foam Tape |
| 7. Extreme Tube End Plate | 20. Zamack Adaptor Spacer |
| 8. Zamack Adaptor | 21. Extreme Square Control Bracket Plate |
| 9. Wire Guide Adaptor Plate & Screws | 22. Extreme Square Idler Bracket Plate |
| 10. Extreme Cassette End Plate & Screws | 23. Fabric Brush - T-Slot Fit |
| for both sides | |
| 11. Fork Swage Terminal | |

Open Brackets

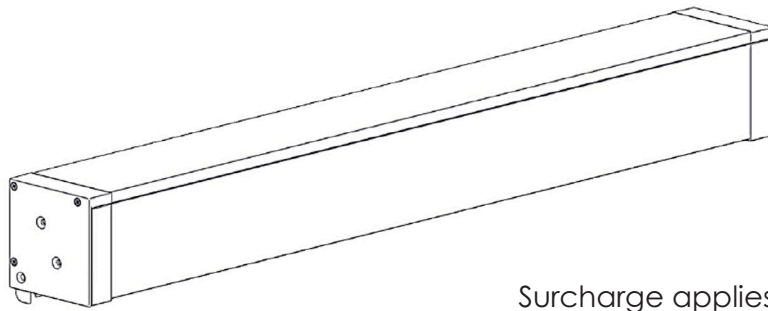


Surcharge applies for bracket covers.

Stainless steel open brackets available. Surcharge applies.



Headbox



Surcharge applies.

Tube

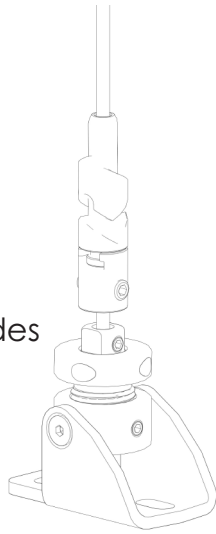


Tube with reducer attached.

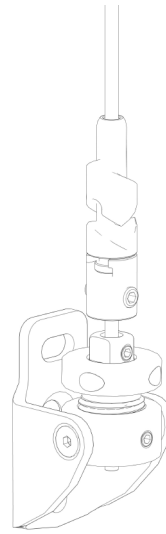


Side Guides

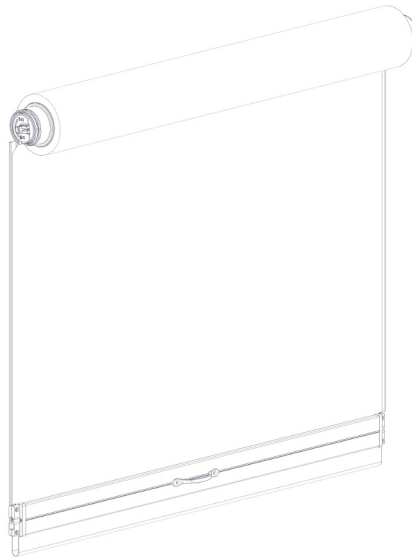
Side Wire Guides
Floor Fix



Side Wire Guides
Face/Side Fix



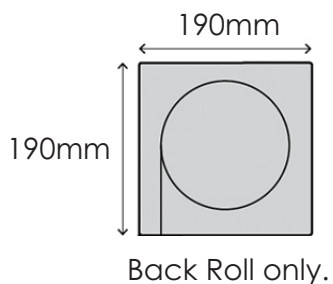
Screen with 2 Base Rail Options



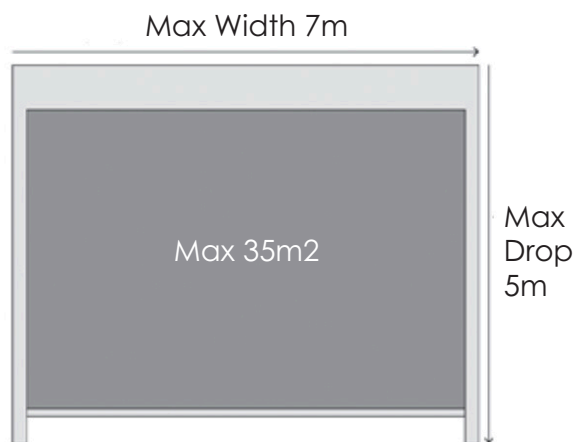
F72 Options

Widths	Colours
4000mm - 7000mm	White Woodland Grey Black Monument Natural Anodised Custom*
	*Surcharge applies. Expect a longer lead time.

Side View



Front View



Always measure looking from the front of the Shadesol blind with the blind as a back roll.

⚠ Shadesol orders received are assumed to be provided make size (outside box measurement). We do not take any further deductions.

Motorised: Rollease Acmeda Range

Automate Motors

FT S60 for Wire Guides (under 15m²)

X50 for Extremes (under 35m²)

Automate Remotes

5 Channel

15 Channel

Automate Sensors

Automate Wind + Sun Sensor (solar)

Automate Pulse / WiFi Hub (suitable with all ARC motors)

Repeater

Motorised: Somfy Range

Somfy Motors

Altus 50 RTS 6/32 (up to 6m²)

Altus 50 RTS 25/17 (between 6 & 8m²)

Altus 50 RTS 40/17 (between 9 & 10m²)

Somfy Remotes

Situo 1 Channel (Pure)

Situo 5 Channel (Pure)

Somfy Sensors

Eolis RTS Sensor (wind)



Motor Programming Guide

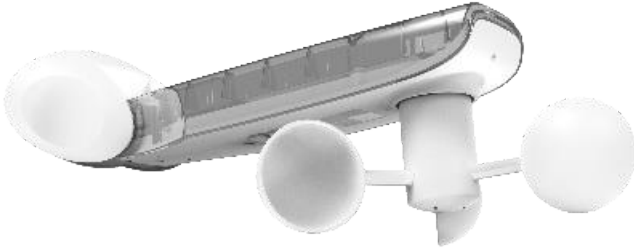
Click here to download the Automate programming guide.



Motor Programming Guide

Click here to download the Somfy programming guide.

Solar Sensor: Automate ARC



The solar-powered ARC Wind and Sun Sensor naturally reacts to the elements to automatically open or close a Channel Guide. Works to a range of 35m² for indoors, 200m open area.



Set Up Guide

Click here to download Automate Solar Power, Wind, Light & Rain set up guide.

Solar Sensor: Soliris RTS



Set Up Guide

Click here to download Soliris RTS Sensor set up guide.

Automate External 240V AC Wind & Light Sensor



Features an anemometer to measure wind speed and a lux meter to measure light intensity and perform an automated action.

Integrated LCD displaying signal strength, wind speed and lux values. Switches to off mode for energy saving.

Compatible with all ARC external motors.

Can be mounted to the roof, wall, eave or fascia, to suit your requirements.

Remote: Push 5 Channel

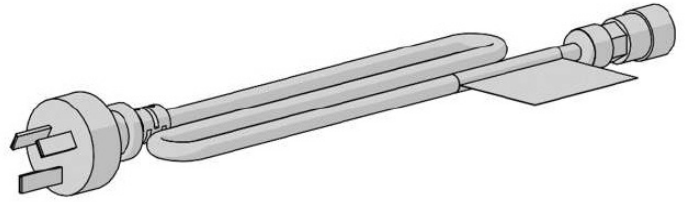


Remote: Situo RTS



Control all Radio Technology Somfy® (RTS) products such as draperies, roller/Roman shades, awnings and LED lights with an elegant Situo® RTS control. Sporting a sleek modern look, it's sure to add a touch of elegance to any decor.

Automate Molex with Plug



- Provides a quick & easy connection option for installation of our external motors when a nearby GPO is available.
- Pre-terminated with a standard 3-pin plug, so an electrician is not required on site to complete the job.
- Maintains the use of the in-line connection.

Remote: Smoove 1 RTS



The Smoove® 1 RTS surface-mounted wall switch avoids cutting into drywall. This single channel, battery-operated solution is easy to install, and doesn't require an electrician. Compatible with seven decorative color frames (sold separately), users can easily complement any décor.

Remote: Push 1 Channel



Push 1 Channel remote offers intuitive, user-friendly operation with tactile buttons, perfect for controlling single blinds or multiple blinds at once. Available in sleek gloss white or elegant matte black, it seamlessly complements the existing Push range with its slim, modern design.

Remote: Automate RF White 5-Channel



The Automate Paradigm surface mount switch features a contemporary design and a wire-free deployment, making it retrofit-ready for any location. Paradigm 5-channel switches are perfect for all internal motorised blind applications.

Automation: Automate Pulse Hub

Smartphone control is only available with the Automate motor + Pulse Hub - additional surcharge applies.



Set Up Guide

Click here to download Automate Pulse set up guide.



Programming iOS

Click here to download the programming guide for iOS.



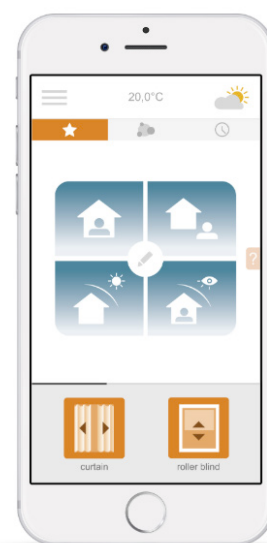
Programming Android

Click here to download the programming guide for Android.

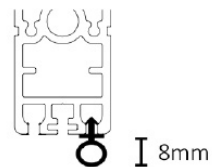
Automation: Connexoon Windows RTS **Temporarily unavailable to order from 15/10/2021*

Connexoon Window RTS is an intuitive, smart and playful app control solution designed to simplify your life.

- Control for up to 30 RTS channels per Connexoon from iOS and Android devices
- 4 scenarios per Connexoon
- 4 modes per Connexoon
- 8 schedules per Connexoon
- Automate window coverings with Scenes and Schedules
- Supports Up/Down/Stop commands and incremental control (tilt/brightness)
- Remote access via internet connection
- Ability to connect 4 smartphone devices
- Compatible with entire range of RTS products
- IFTTT (If This, Then That) compatible
- Ability to control via third-party voice assistants include Google Home and Amazon Echo
- Trigger scenes and schedules using voice commands or pre-set automations

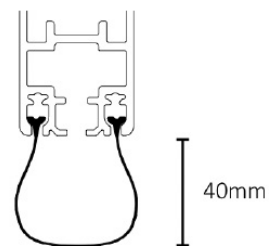


Bubble Strip



The Bubble Strip is the default factory option unless otherwise specified.

Ultra Seal



The Ultra Seal is the only option available for the Ultra Lock.

The Ultra Lock comes standard with the Ultra Seal. As the Ultra Lock drops down in order to unlock itself, the Ultra Seal allows for the deduction at the bottom. No other seal is appropriate for the Ultra Lock.

Headbox



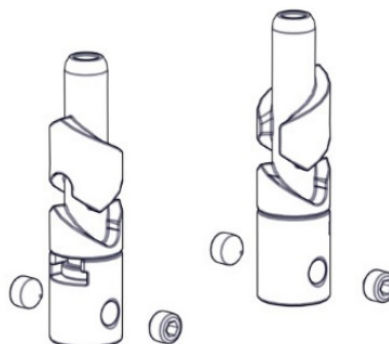
Full enclosed cassette



Semi fascia

Surcharge applies.

Ultra Lock



The Ultra Lock for Wire Guide comes standard with the Spring Assist control, however you are required to select it in the ordering system.

Base Rail - F56



Bead feature

Base Rail - F72



The F72 is suitable for blinds 4m - 5.8m wide.

F72 Options	
Widths	Colours
Up To 7000mm	White Woodland Grey Black Monument Natural Anodised Custom* *Surcharge applies. Expect a longer lead time

Standard Angles

Angles	
Type	Size
Angle Mill	40 x 20 x 3mm 40 x 40 x 3mm 75 x 25 x 3mm 100 x 50 x 6mm 25 x 25 x 3mm 50 x 25 x 3mm 50 x 50 x 3mm
Flat Bar Mill	50 x 3mm 100 x 3mm
Square Box Section Mill	50 x 3mm 100 x 50mm
Custom angles can be sourced. Please send an enquiry to TWO Orders prior to placing the order.	



Shadesol

ALFRESCO | STRAIGHT DROP

To ensure you are reading the most up to date product information, always refer to the latest version of the product guide. The latest version is available to download from the Sales & Marketing Centre.

If you have any product, installation, ordering or pricing questions, please contact your TWO Account Manager for assistance.

For pricing, please refer to the price and surcharge list.

Swatched Range

To order your Shadesol fabric swatch book, please contact your TWO Account Manager.

Fabric	
Group 1	Colours
X-Weave 5%	Ebony, Charcoal, Flint, Monument, Woodland Grey, Shale Grey, Paperbark, Surf Mist, Snow
Group 2	
X-Weave 1%	Ebony, Charcoal, Monument

Shadesol X-weave fabrics have been fire tested and certified as fire retardant.

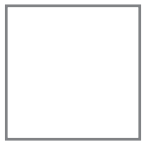
All Other Fabric Ranges

The below range of fabrics are available to order while stock last.

Fabric
Group 1
SolarView
Group 2
Visiontex View 85%
Ricky QM5
Kleenscreen
Group 3
Visiontex Plus 94%
Visiontex Ultra 99%
Outlook Mode 95%
Group 4
Mode Privacy 99%
Visiontex Extreme
Mode Zero

STRAIGHT DROP | FABRIC & COLOURS

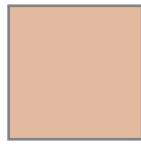
Standard Colours



White



Classic Cream



Paperbark



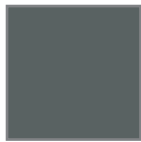
Surf Mist



Black



Monument



Woodland
Grey



Custom

Hardware is available in 7 standard colours plus the option to custom powder coat.

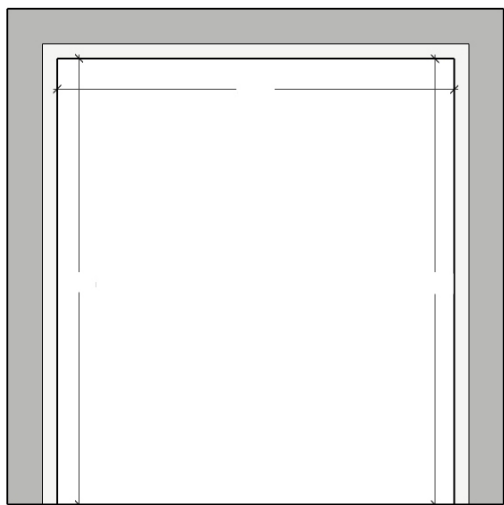
Custom Colours



For custom colours, please refer to the current Dulux Powder Coat Selector.

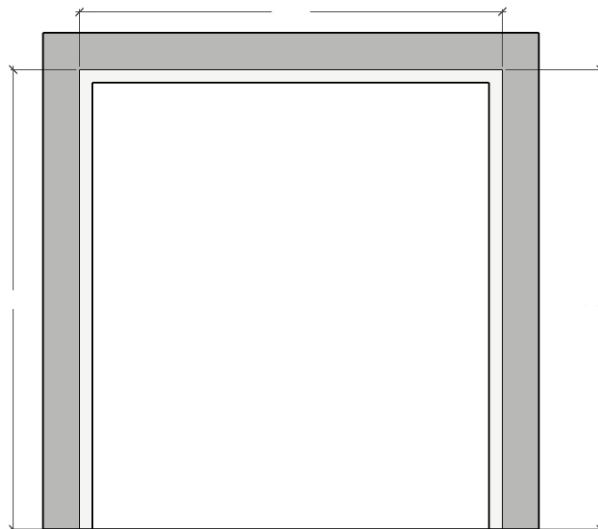
STRAIGHT DROP | MOUNT

Side Fit



Side Fit (Inside): The straight drop blind is installed on the inside of the opening.

Face Fit



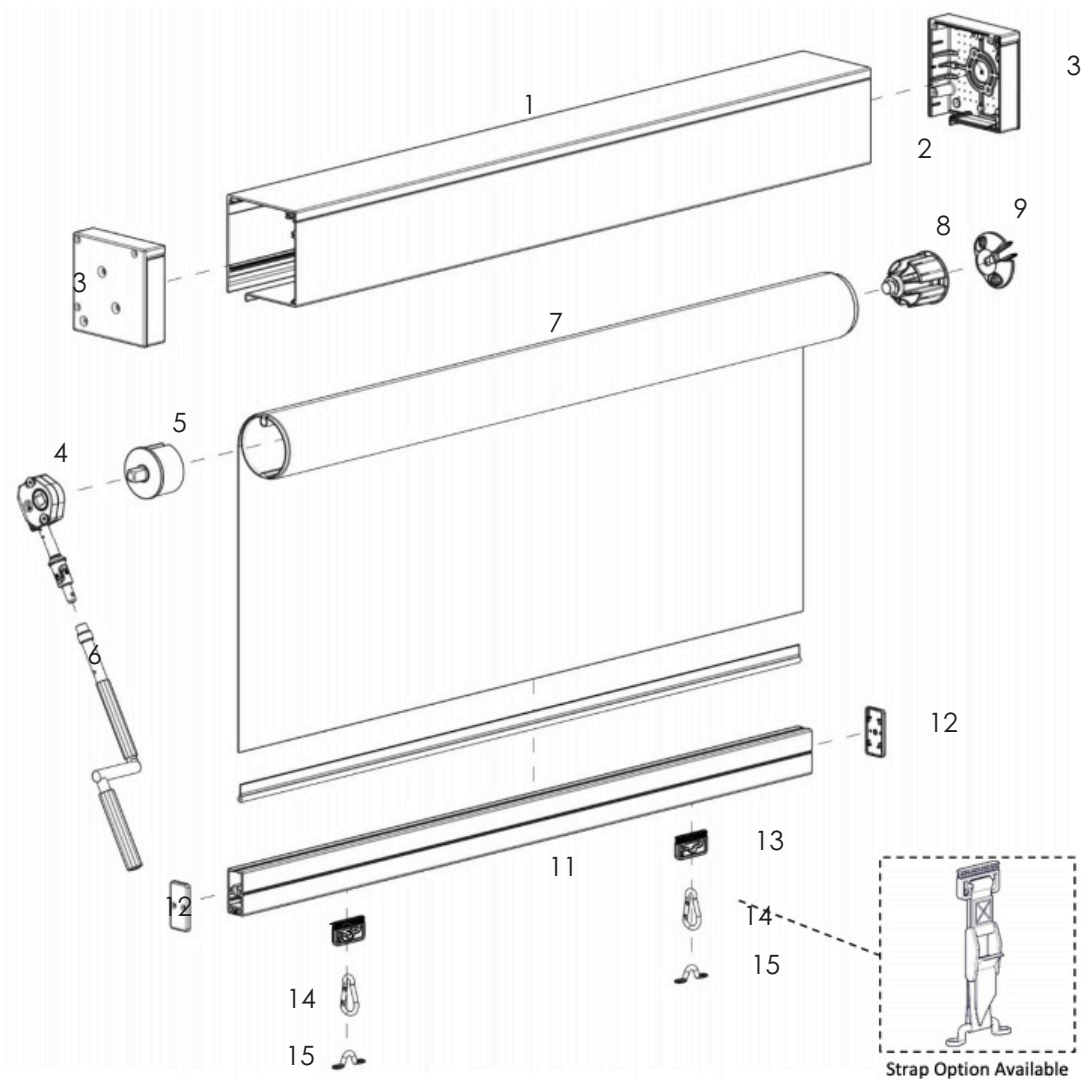
Face Fit (Outside): The straight drop blind is installed on the front of the opening.

When determining the mount, check for any obstructions within or outside of the opening such as hand rails and check for out-of-square measurements, which may affect the operation of the blind as it moves up and down.



Componentry Breakdown

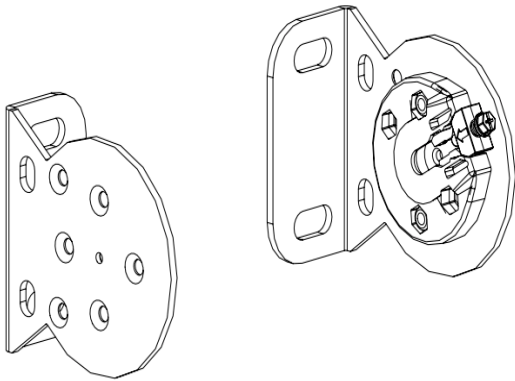
Straight Drop, Box 120, Gear, F56 Weight Bar



Item # Description

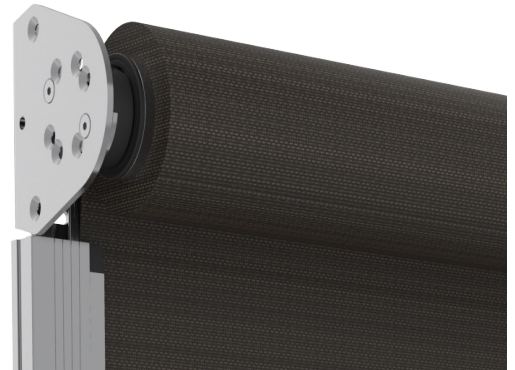
- | | |
|-----------------------------------|--|
| 1. Box 120 Back | 9. Tube - 78mm Aluminium |
| 2. Box 120 Cover | 10. 7.2mm Tail Spline |
| 3. Box 120 End Plate set + screws | 11. F56 Weight Bar |
| 4. Gear 5:1 | 12. F56 Weight Bar Plain End Cap |
| 5. Crank Control Arm | 13. 25mm Strap Down Loop - Surcharge applies |
| 6. Crank Adaptor - 78mm Tube | 14. Strap Down Spring Clip - 50mm - Surcharge applies |
| 7. Idler Housing - 78mm Tube | 15. Strap Down Pad Eye Saddle - 30mm - Surcharge applies |
| 8. Idler/Spring Adaptor | |

Open Brackets

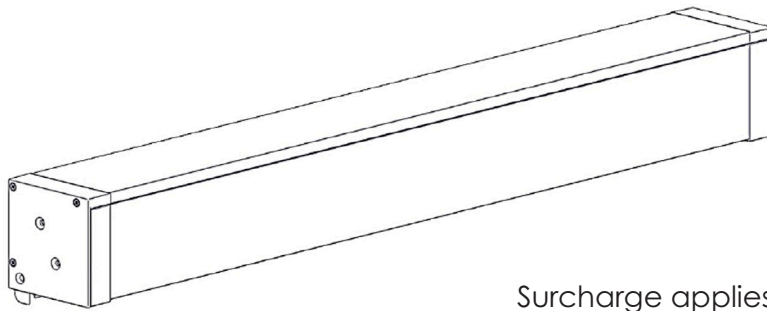


Surcharge applies for bracket covers.

Stainless steel open brackets available. Surcharge applies.



Headbox



Surcharge applies.

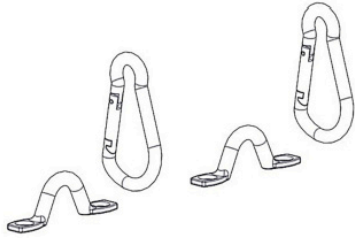
Tube



Tube with reducer attached.

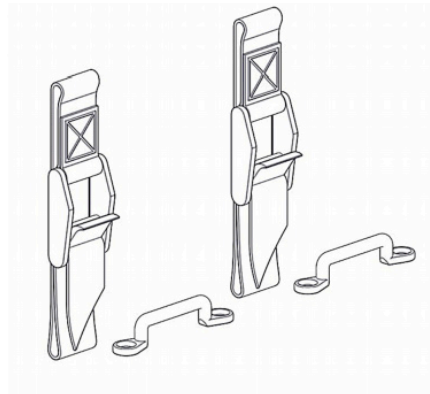


Hold Down Clips



Strap Down Spring Clip

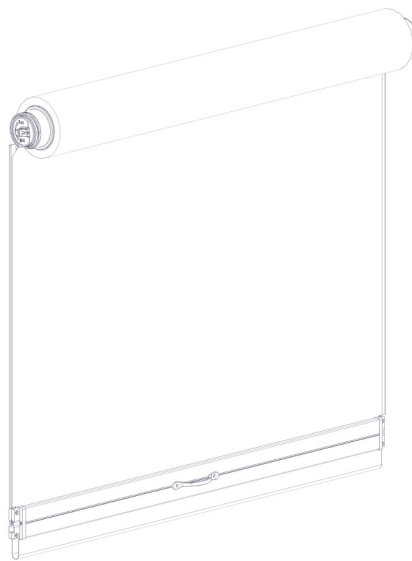
or



Strap Down Strap (optional)

Screen with 2 Base Rail Options

The standard **F56 Base Rail** is included at all sizes and colour matched to the headboard and/or side channels.



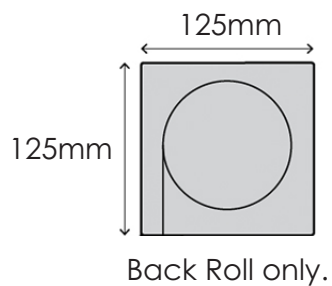
Standard upgrade to **F72 Base Rail** applies to Shadesol blinds over 4m wide (included in price). If under 4m wide it is available as an optional upgrade (see Options).

F56 Options	
Widths	Colours
800mm - 4000mm	White Classic Cream Paperbark Natural Anodised Monument Woodland Grey Black Custom*
	*Surcharge applies. Expect a longer lead time.

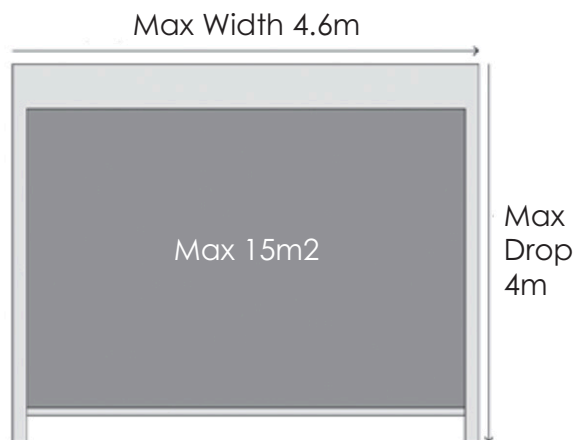
F72 Options	
Widths	Colours
4001mm - 7000mm	White Woodland Grey Black Monument Natural Anodised Custom*
	*Surcharge applies. Expect a longer lead time.

STRAIGHT DROP | SPECIFICATIONS

Side View



Front View



Always measure looking from the front of the Shadesol blind with the blind as a back roll.

! Shadesol orders received are assumed to be provided make size (outside box measurement). We do not take any further deductions.

Manual: Crank Gear

Easy-to-use manual crank operation, unobtrusive design, removable crank.



Motorised: Rollease Acmeda Range

Automate Motors

FT S60 for Straight Drops (under 15m²)

Automate Remotes

5 Channel

15 Channel

Automate Sensors

Automate Wind + Sun Sensor (solar)

Automate Pulse / WiFi Hub (suitable with all ARC motors)

Repeater

Motorised: Somfy Range

Somfy Motors

Altus 50 RTS 6/32 (up to 6m²)

Altus 50 RTS 25/17 (between 6 & 8m²)

Altus 50 RTS 40/17 (between 9 & 10m²)

Somfy Remotes

Situo 1 Channel (Pure)

Situo 5 Channel (Pure)

Somfy Sensors

Eolis RTS Sensor (wind)

Minimum Width per Operation Type

Operation type	Minimum Width
Crank	500mm
15 Nm Motor (Automate FT S60)	770mm
10 Nm Motor (Linx Volt Torque Battery)	1000mm



Motor Programming Guide

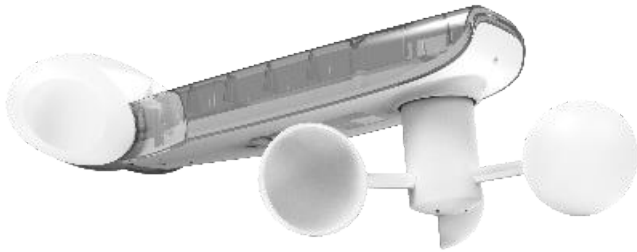
Click here to download the Automate programming guide.



Motor Programming Guide

Click here to download the Somfy programming guide.

Solar Sensor: Automate ARC



The solar-powered ARC Wind and Sun Sensor naturally reacts to the elements to automatically open or close a Channel Guide. Works to a range of 35m² for indoors, 200m open area.



Set Up Guide

Click here to download Automate Solar Power, Wind, Light & Rain set up guide.

Solar Sensor: Soliris RTS



The Soliris RTS Sun and Wind Sensor automatically controls your RTS motorised products based on current weather conditions.



Set Up Guide

Click here to download Soliris RTS Sensor set up guide.

Automate External 240V AC Wind & Light Sensor



Features an anemometer to measure wind speed and a lux meter to measure light intensity and perform an automated action.

Integrated LCD displaying signal strength, wind speed and lux values. Switches to off mode for energy saving.

Compatible with all ARC external motors.

Can be mounted to the roof, wall, eave or fascia, to suit your requirements.

Remote: Push 5 Channel



Remote: Situo RTS



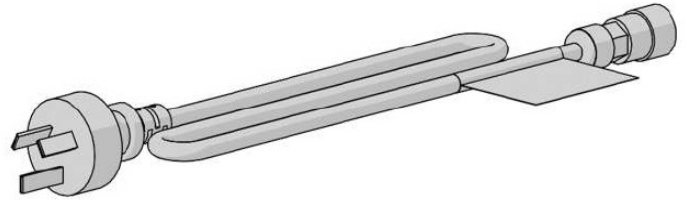
Control all Radio Technology Somfy® (RTS) products such as draperies, roller/Roman shades, awnings and LED lights with an elegant Situo® RTS control. Sporting a sleek modern look, it's sure to add a touch of elegance to any decor.

Remote: Smoove 1 RTS



The Smoove® 1 RTS surface-mounted wall switch avoids cutting into drywall. This single channel, battery-operated solution is easy to install, and doesn't require an electrician. Compatible with seven decorative color frames (sold separately), users can easily complement any décor.

Automate Molex with Plug



- Provides a quick & easy connection option for installation of our external motors when a nearby GPO is available.
- Pre-terminated with a standard 3-pin plug, so an electrician is not required on site to complete the job.
- Maintains the use of the in-line connection.

Remote: Push 1 Channel



Push 1 Channel remote offers intuitive, user-friendly operation with tactile buttons, perfect for controlling single blinds or multiple blinds at once. Available in sleek gloss white or elegant matte black, it seamlessly complements the existing Push range with its slim, modern design.

Remote: Automate RF White 5-Channel



The Automate Paradigm surface mount switch features a contemporary design and a wire-free deployment, making it retrofit-ready for any location. Paradigm 5-channel switches are perfect for all internal motorised blind applications.

Automation: Automate Pulse Hub

Smartphone control is only available with the Automate motor + Pulse Hub - additional surcharge applies.



-  **Set Up Guide**
Click here to download Automate Pulse set up guide.
-  **Programming iOS**
Click here to download the programming guide for iOS.
-  **Programming Android**
Click here to download the programming guide for Android.

Automation: Connexoon Windows RTS **Temporarily unavailable to order from 15/10/2021*

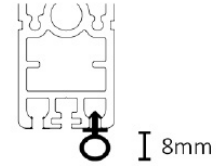
Connexoon Window RTS is an intuitive, smart and playful app control solution designed to simplify your life.

- Control for up to 30 RTS channels per Connexoon from iOS and Android devices
- 4 scenarios per Connexoon
- 4 modes per Connexoon
- 8 schedules per Connexoon
- Automate window coverings with Scenes and Schedules
- Supports Up/Down/Stop commands and incremental control (tilt/brightness)
- Remote access via internet connection
- Ability to connect 4 smartphone devices
- Compatible with entire range of RTS products
- IFTTT (If This, Then That) compatible
- Ability to control via third-party voice assistants include Google Home and Amazon Echo
- Trigger scenes and schedules using voice commands or pre-set automations



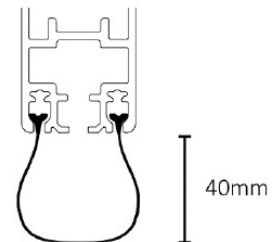
STRAIGHT DROP | OPTIONS

Bubble Strip



The Bubble Strip is the default factory option unless otherwise specified.

Ultra Seal



The Ultra Seal is the only option available for the Ultra Lock.

The Ultra Lock comes standard with the Ultra Seal. As the Ultra Lock drops down in order to unlock itself, the Ultra Seal allows for the deduction at the bottom. No other seal is appropriate for the Ultra Lock.

STRAIGHT DROP | OPTIONS

Headbox



Full enclosed cassette



Semi fascia

Surcharge applies.

Handle

Handle available in stainless steel and dark grey



Base Rail - F56



Bead feature

Standard Angles

Angles

Type	Size
Angle Mill	40 x 20 x 3mm
	40 x 40 x 3mm
	75 x 25 x 3mm
	100 x 50 x 6mm
	25 x 25 x 3mm
	50 x 25 x 3mm
	50 x 50 x 3mm
Flat Bar Mill	50 x 3mm
	100 x 3mm
Square Box Section Mill	50 x 3mm
	100 x 50mm

Custom angles can be sourced. Please send an enquiry to TWO Orders prior to placing the order.

Base Rail - F72



The F72 is suitable for blinds 4m - 5.8m wide.

STRAIGHT DROP | OPTIONS

F56 Options	
Widths	Colours
800mm - 3999mm	White Classic Cream Paperbark Natural Anodised Monument Woodland Grey Black Custom* *Surcharge applies

F72 Options	
Widths	Colours
4001mm - 7000mm	White Woodland Grey Black Monument Natural Anodised Custom* *Surcharge applies. Expect a longer lead time



Shadesol

ALFRESCO | PIVOT ARM

To ensure you are reading the most up to date product information, always refer to the latest version of the product guide. The latest version is available to download from the Sales & Marketing Centre.

If you have any product, installation, ordering or pricing questions, please contact your TWO Account Manager for assistance.

For pricing, please refer to the price and surcharge list.

Swatched Range

To order your Shadesol fabric swatch book, please contact your TWO Account Manager.

Fabric	
Group 1	Colours
X-Weave 5%	Ebony, Charcoal, Flint, Monument, Woodland Grey, Shale Grey, Paperbark, Surf Mist, Snow
Group 2	
X-Weave 1%	Ebony, Charcoal, Monument

Shadesol X-weave fabrics have been fire tested and certified as fire retardant.

All Other Fabric Ranges

The below range of fabrics are available to order while stock last.

Fabric
Group 1
SolarView
Group 2
Visiontex View 85%
Ricky QM5
Kleenscreen
Group 3
Visiontex Plus 94%
Visiontex Ultra 99%
Outlook Mode 95%
Group 4
Mode Privacy 99%
Visiontex Extreme
Mode Zero

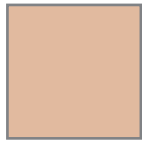
Standard Colours



White



Classic Cream



Paperbark



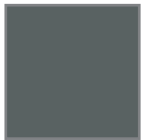
Surf Mist



Black



Monument



Woodland
Grey



Custom

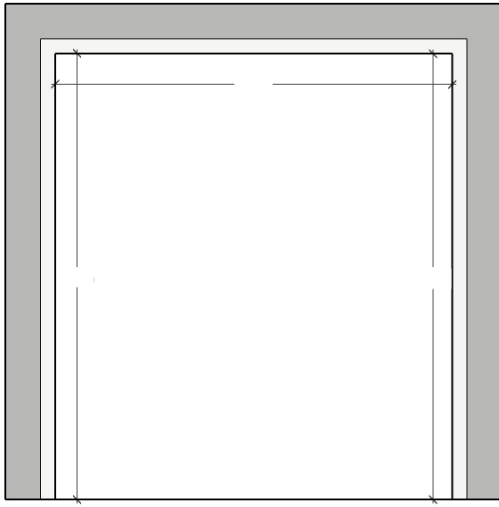
Hardware is available in 7 standard colours plus the option to custom powder coat.

Custom Colours



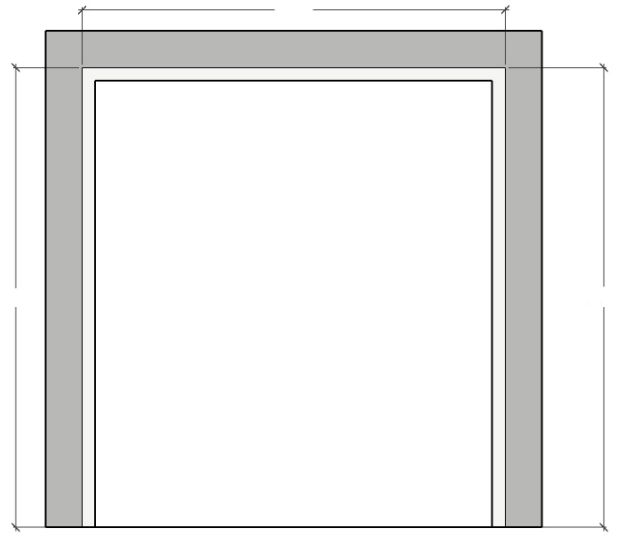
For custom colours, please refer to the current Dulux Powder Coat Selector.

Side Fit



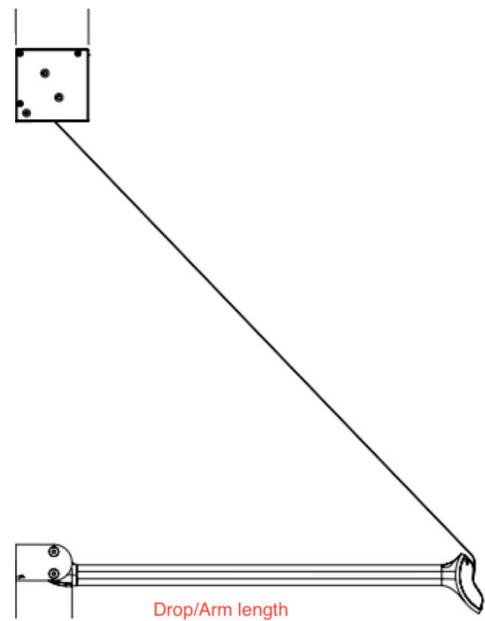
Side Fit (Inside): The pivot arm blind is installed on the inside of the opening.

Face Fit



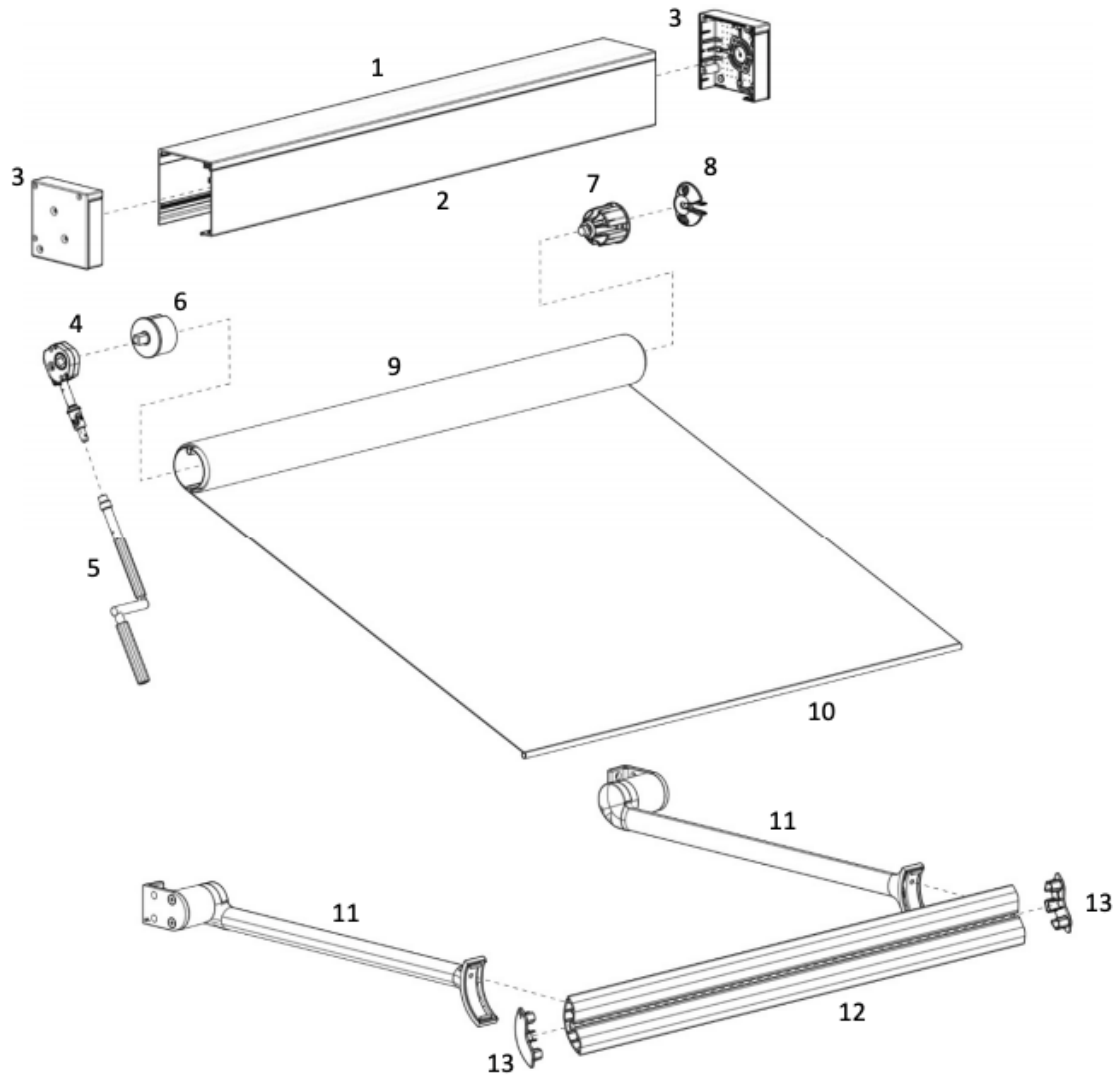
Face Fit (Outside): The pivot arm blind is installed on the front of the opening.

When determining the mount, check for any obstructions within or outside of the opening such as hand rails and check for out-of-square measurements, which may affect the operation of the blind as it moves up and down.



Componentry Breakdown

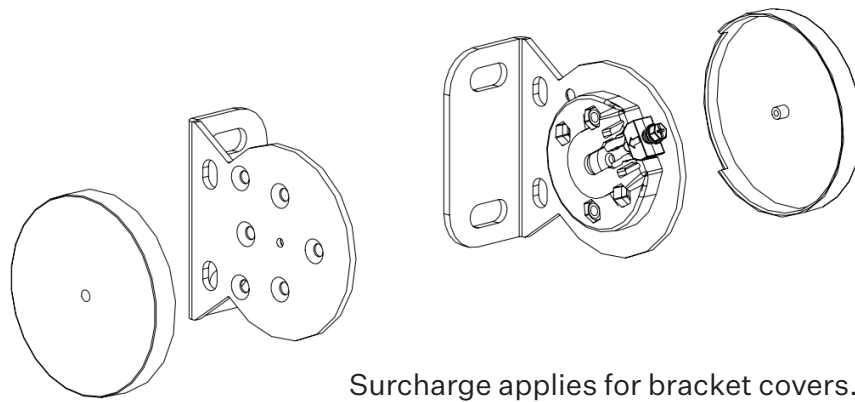
Pivot Arm, Box 120, Gear



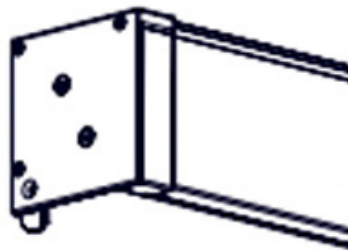
Item # Description

- | | |
|-----------------------------------|--|
| 1. Box 120 Back | 8. Idler/Spring Adaptor |
| 2. Box 120 Cover | 9. 78mm Aluminium |
| 3. Box 120 End Plate set + screws | 10. 7.2mm Tail Spline |
| 4. Gear 5:1 | 11. Pivot Arms |
| 5. Crank Control Arm | 12. Pivot Arm Terminal Bar |
| 6. Crank Adaptor - 78mm | 13. Pivot Arm Terminal Bar End Cap Set |
| 7. Idler - 78mm | |

Open Brackets



Headbox



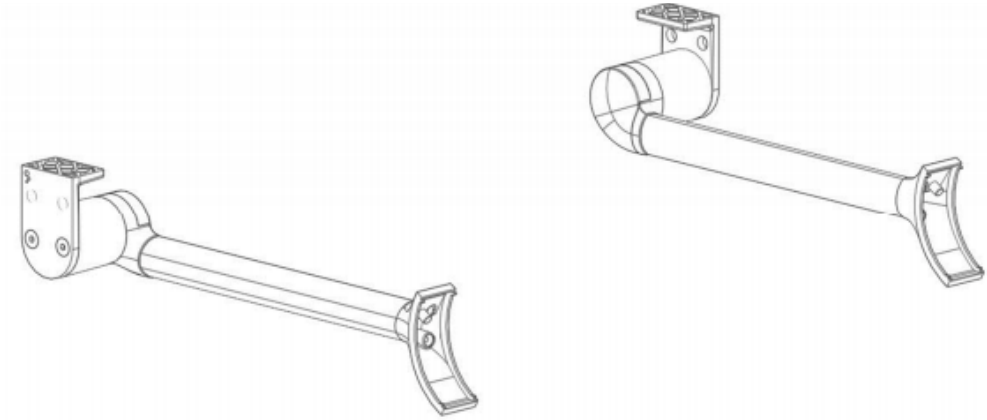
Tube



Tube with reducer attached.

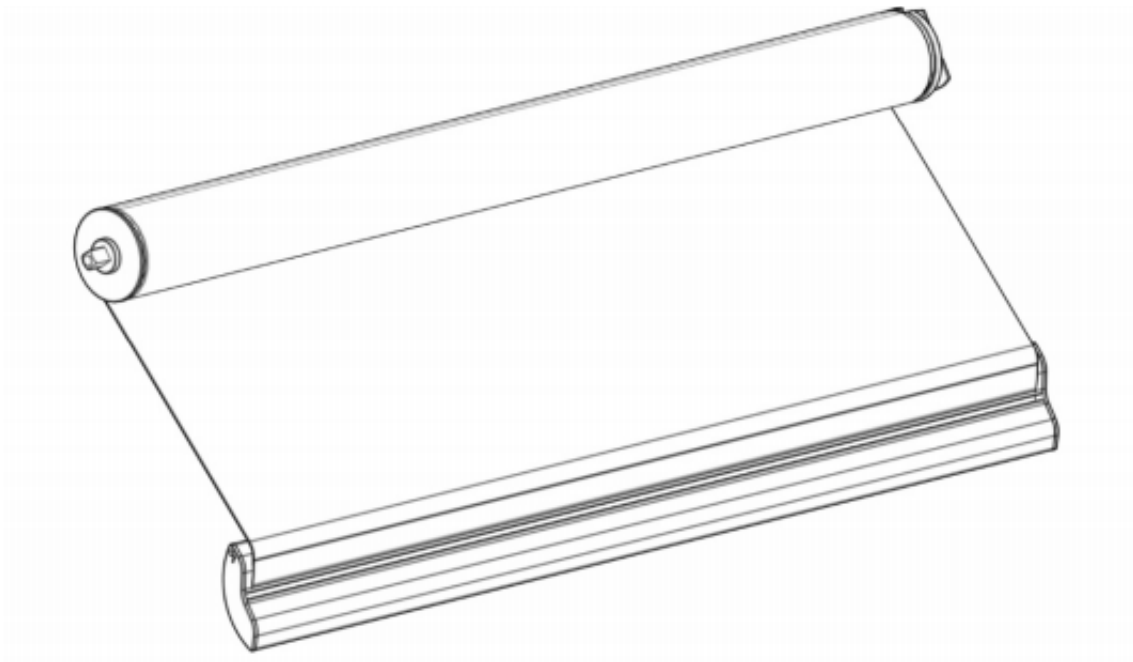


Arms

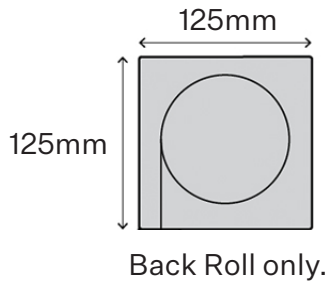


Maximum projection of arms is 1600mm

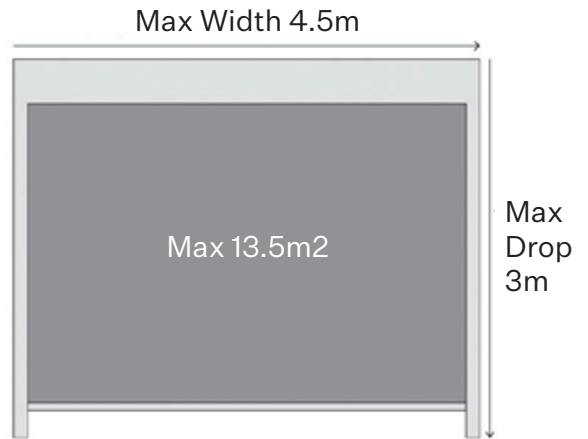
Screen with Base Rail



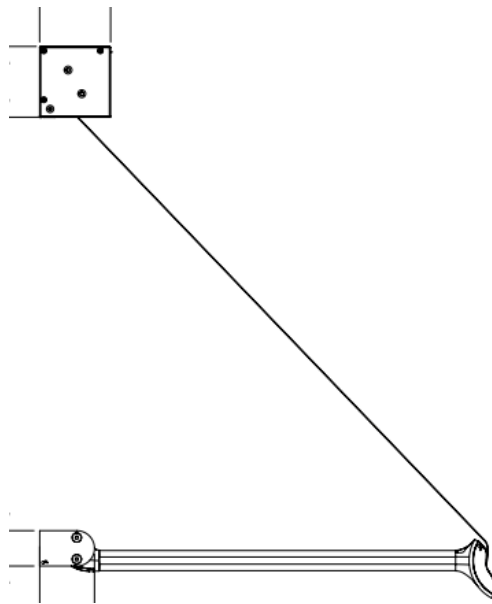
Side View



Front View



Always measure looking from the front of the Shadesol blind with the blind as a back roll.



! Shadesol orders received are assumed to be provided make size (outside box measurement). We do not take any further deductions.

Manual: Crank Gear

Easy-to-use manual crank operation, unobtrusive design, removable crank.



Motorised: Rollease Acmeda Range

Automate Motors

FT S60 for Pivot Arms (under 15m²)

Automate Remotes

5 Channel

15 Channel

Automate Sensors

Automate Wind + Sun Sensor (solar)

Automate Pulse / WiFi Hub (suitable with all ARC motors)

Repeater

Motorised: Somfy Range

Somfy Motors

Altus 50 RTS 6/32 (up to 6m²)

Altus 50 RTS 25/17 (between 6 & 8m²)

Altus 50 RTS 40/17 (between 9 & 10m²)

Somfy Remotes

Situo 1 Channel (Pure)

Situo 5 Channel (Pure)

Somfy Sensors

Eolis RTS Sensor (wind)

Minimum Width per Operation Type

Operation type	Minimum Width
Crank	500mm
15 Nm Motor (Automate FT S60)	770mm
10 Nm Motor (Linx Volt Torque Battery)	1000mm



Motor Programming Guide

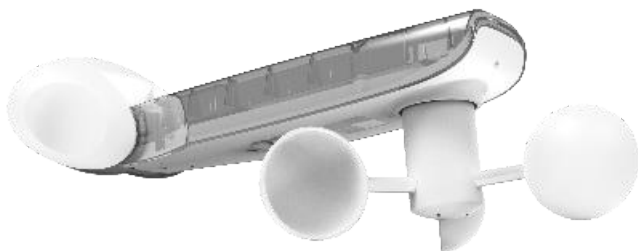
Click here to download the Automate programming guide.



Motor Programming Guide

Click here to download the Somfy programming guide.

Solar Sensor: Automate ARC



The solar-powered ARC Wind and Sun Sensor naturally reacts to the elements to automatically open or close a Channel Guide. Works to a range of 35m² for indoors, 200m open area.



Set Up Guide

Click here to download Automate Solar Power, Wind, Light & Rain set up guide.

Solar Sensor: Soliris RTS



The Soliris RTS Sun and Wind Sensor automatically controls your RTS motorised products based on current weather conditions.



Set Up Guide

Click here to download Soliris RTS Sensor set up guide.

Automate External 240V AC Wind & Light Sensor



Features an anemometer to measure wind speed and a lux meter to measure light intensity and perform an automated action.

Integrated LCD displaying signal strength, wind speed and lux values. Switches to off mode for energy saving.

Compatible with all ARC external motors.

Can be mounted to the roof, wall, eave or fascia, to suit your requirements.

Remote: Push 5 Channel



Remote: Automate RF White 5-Channel



The Automate Paradigm surface mount switch features a contemporary design and a wire-free deployment, making it retrofit-ready for any location. Paradigm 5-channel switches are perfect for all internal motorised blind applications.

Remote: Push 1 Channel



Push 1 Channel remote offers intuitive, user-friendly operation with tactile buttons, perfect for controlling single blinds or multiple blinds at once. Available in sleek gloss white or elegant matte black, it seamlessly complements the existing Push range with its slim, modern design.

Remote: Situo RTS



Control all Radio Technology Somfy® (RTS) products such as draperies, roller/Roman shades, awnings and LED lights with an elegant Situo® RTS control. Sporting a sleek modern look, it's sure to add a touch of elegance to any decor.

Remote: Smoove 1 RTS



The Smoove® 1 RTS surface-mounted wall switch avoids cutting into drywall. This single channel, battery-operated solution is easy to install, and doesn't require an electrician. Compatible with seven decorative color frames (sold separately), users can easily complement any décor.

Automation: Automate Pulse Hub

Smartphone control is only available with the Automate motor + Pulse Hub - additional surcharge applies.



Set Up Guide

Click here to download Automate Pulse set up guide.



Programming iOS

Click here to download the programming guide for iOS.



Programming Android

Click here to download the programming guide for Android.

Automation: Connexoon Windows RTS

Connexoon Window RTS is an intuitive, smart and playful app control solution designed to simplify your life.

- Control for up to 30 RTS channels per Connexoon from iOS and Android devices
- 4 scenarios per Connexoon
- 4 modes per Connexoon
- 8 schedules per Connexoon
- Automate window coverings with Scenes and Schedules
- Supports Up/Down/Stop commands and incremental control (tilt/brightness)
- Remote access via internet connection
- Ability to connect 4 smartphone devices
- Compatible with entire range of RTS products
- IFTTT (If This, Then That) compatible
- Ability to control via third-party voice assistants include Google Home and Amazon Echo
- Trigger scenes and schedules using voice commands or pre-set automations



PIVOT ARM | OPTIONS

Base Rail



Headbox



Semi
fascia

Surcharge applies.

Standard Angles

Angles	
Type	Size
Angle Mill	40 x 20 x 3mm
	40 x 40 x 3mm
	75 x 25 x 3mm
	100 x 50 x 6mm
	25 x 25 x 3mm
	50 x 25 x 3mm
50 x 50 x 3mm	
Flat Bar Mill	50 x 3mm
	100 x 3mm
Square Box Section Mill	50 x 3mm
	100 x 50mm
Custom angles can be sourced. Please send an enquiry to TWO Orders prior to placing the order.	