



**COLOURVUE  
ESSENTIALS**  
Motorised Roller Blind

PRODUCT GUIDE

V271124





## TWO GUIDELINES

Orders that are released to TWO are processed in the most timely manner possible. As such, any changes made to an order once it is released to TWO cannot be guaranteed to be applied.

Invoices for orders with multiple products are due upon receipt of each product.

If the order is already in production, initial costs, cancellations or any change costs will be the responsibility of the dealer to cover.

All drawings, notes and emails with questions must be answered before an order is entered in to the production line. Delays in the timely processing of these by customers will lead to longer lead times.

All factory/freight repairs are to have photographic/video proof. If neither are available at the time of placing the repair, it will be processed as a dealer responsibility. TWO will credit back the cost of the repair once proof of factory/freight responsibility is given.

For special request/non-standard/limited availability items please check first with Head Office for availability. Any surcharges for these items will be the responsibility of the dealer to cover, even if it is not listed on the price list.

PDF Estimates generated from the system may not reflect final pricing. If all items are not selected in the order form or details are added to the notes section, the price may be altered.

All dealers are responsible for having the most current price lists and product manuals. If unsure please contact your Account Manager to confirm.

## TABLE OF CONTENTS

Care & Maintenance.....	4
Fabric & Colours.....	4
Bottom Rail.....	4
Blind Size, Mount, Back/Front Roll.....	6
Componentry.....	7
Operation.....	7





## CARE & MAINTENANCE

- Most blind fabrics have stain-resistant protection.
- Cleaning and maintenance of the fabrics should be done with a vacuum and soft brush attachment to remove any loose dirt, fluff or dead bugs.
- Never use abrasive products or solvents/industrial based cleaners.
- If unsure, try cleaning a small inconspicuous area of the blind.

## FABRIC & COLOURS

### Available Fabrics

The following range of fabrics including all colours are available for Colourvue Essentials - Motorised Roller Blinds.

- Kleenscreen (S)
- Focus (BO)
- Kew (BO)
- Metroshade (BO & LF)
- Sanctuary (BO & LF)

### Colourvue Swatched Fabric

Kleenscreen (S)	Pure White, Barley, Alloy, Charcoal, Black
Focus (BO)	White, Chalk, Cloud, Espresso, Shell, Ebony, Ash, Coal
Metroshade (BO)	Dove/White, Nougat, Ice Grey, Quill, Moonstone
Sanctuary (BO & LF)	Plaster, Limestone, Ceramic, Mineral, Baltic

BO = Blockout | LF = Light Filter | S = Screen

## BOTTOM RAIL



D30 Bottom Rail



### Colours

#### D30 Bottom Rail

Smooth Finish: Black, Anodised, White, Sandstone  
Textured Finish: Black, White

## BLIND SIZE, MOUNT, BACK/FRONT ROLL

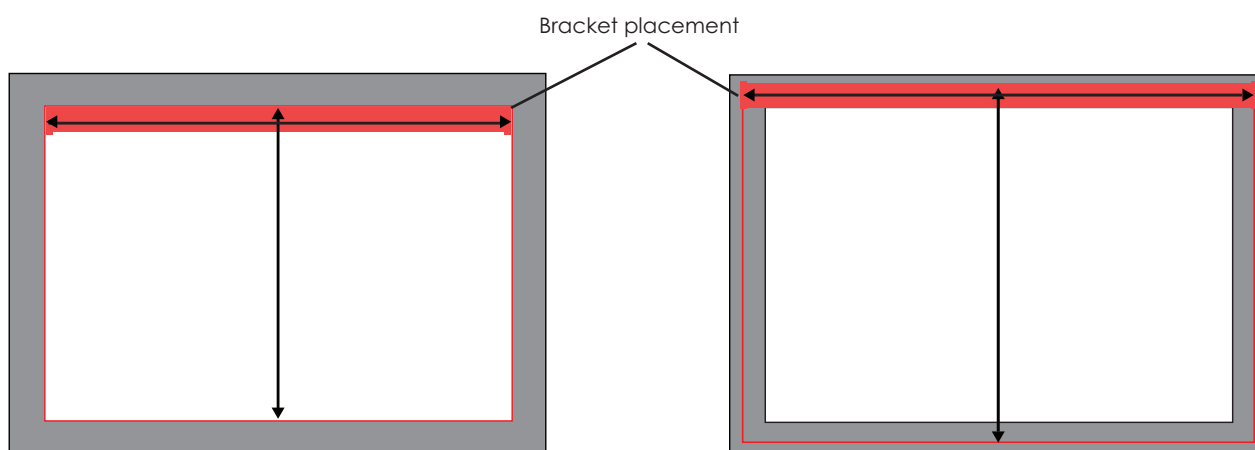
### Size

Minimum width: 550mm

Maximum width: 3000mm

Maximum drop: 3000mm

### Mount



Recess (Inside) - Blind is installed on the inside of the opening.

Face Fit (Out) - Blind is installed on the front of the opening.

Preferably, a sunscreen roller blind would be installed inside the window frame to maximise the blinds thermal insulation.

When determining the mount, check for any obstructions within or outside of the window opening. Some examples are door handles, window winders, bench tops, cabinets or skirting boards which may affect the operation of the blind as it moves up and down.

If there are obstructions, consider changing the roll direction of the blind or mount the blind on the outside of the window frame.

The factory reads blind measurements as width first, followed by drop (W x D). We suggest to always note your measurements down as width x drop, to ensure your measurements are correctly entered into the ordering system.

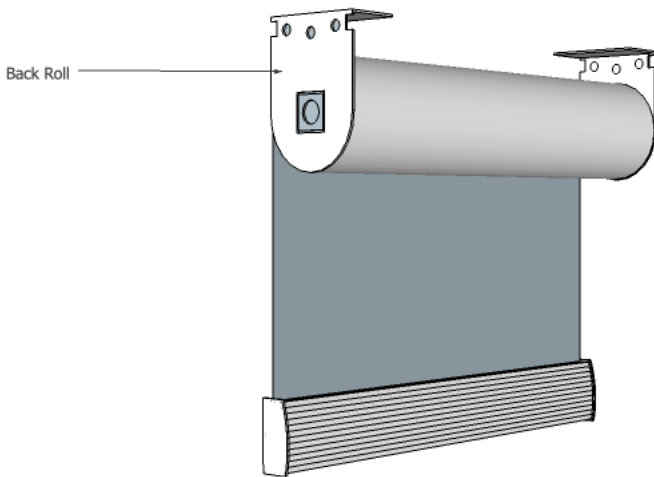
**⚠ Roller blind orders received are assumed to be outside bracket to outside bracket. We do not take any further deductions.**

## BACK/FRONT ROLL

### Back Rolled (Standard)

The fabric rolls off the top of the tube and towards the back of the blind (closer to the window).

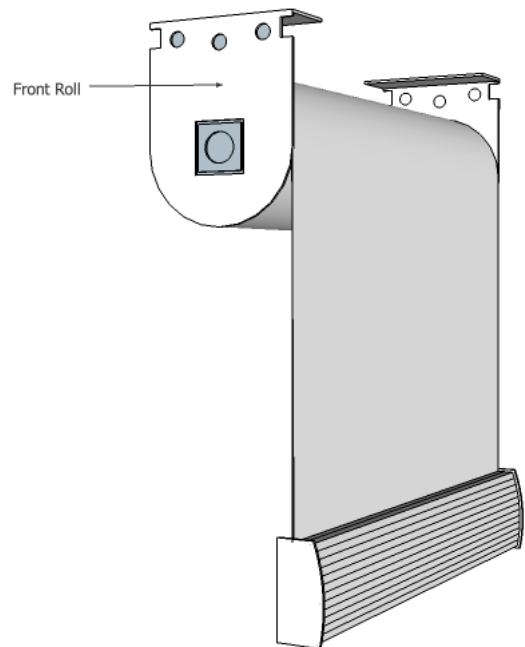
The advantage of back-rolling a blind means that the blind fabric sits closer to the window increasing its thermal insulation and reducing the gap between the window glass and the fabric. The disadvantage of back-rolling a blind means that the colour of the fabric backing (if a blackout with white backing on reverse side) will be visible at the top of the blind.



### Front Rolled

The fabric rolls off the top of the tube and towards the front of the blind (away from the window).

The advantage of front-rolling a blind means that the colour of the fabric chosen is visible at the top of the blind and the blind fabric is able to clear any obstructions that may be present. The disadvantage of front-rolling a blind means that the gap between the window glass and the fabric is larger and this reduces its thermal insulation.



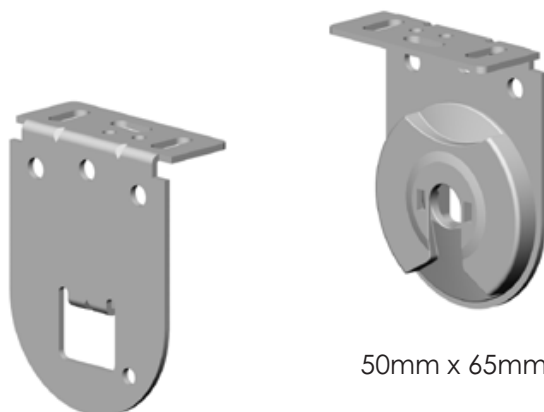
## COMPONENTRY

### Tube

45mm Light Tube  
Width 0 - 2200mm

45mm Heavy Duty Tube  
Width 2201 - 3000mm

### RB09 Brackets - Single Roll



50mm x 65mm

## OPERATION

Colourvue Essentials is available in motorised, battery-operated only.

### Motorised: Whispertech

#### Motor Wire-free

Whispertech 1.1Nm (For blinds 550mm - 2200mm wide and up to a 2200mm drop)

Whispertech 2Nm (For blinds greater than 2200mm in width and/or drop)

#### Remote & Charger

Remote 6 Channels

USB-C Charger with Magnetic USB-C Connector. (A USB-C Connector will be provided for every Whispertech motorised blind. Adaptor not included).

### Remote: Remote 6 Channel



6 Channels  
1 Group



### Motor/Remote Programming Guide

Click here to download.

## OPERATION

### Automation: Bond Bridge Hub

- Facilitates complete automation of your motorised roller blinds.
- Seamlessly integrates with the WhisperTech™ motor for enhanced user experience. It is also compatible with Rollease Acmeda motors.
- Surcharged

Easy programming through the Bond Home App.







**Head Office**  
347 Macdonnell Road  
Clontarf QLD 4019

**Phone** 1300 183 910  
**Email** [orders@two-australia.com](mailto:orders@two-australia.com)  
**Web** [www.two-australia.com](http://www.two-australia.com)

